

MONUMENT RECORD  
State of Indiana - County of Monroe

Section: 32

Township: 8 North

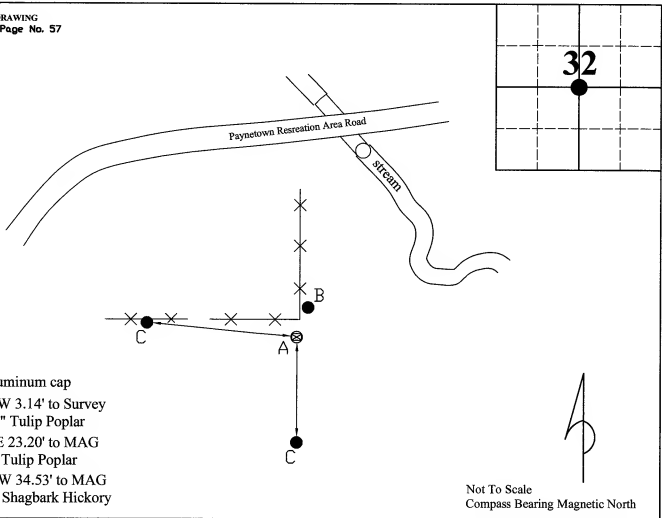
Range: 1 East

Corner ID: SaCr G-23

**Monument Description & Remarks:** 2½" Aluminum cap (Set), "MONROE COUNTY SURVEYOR", (Replacing) old Sandstone with no etching. Survey Sign 5.5ft above ground at pt. B

**References On File:** Legal Survey Book 2 page 230 survey, on file in Surveyor Office

RECOVERY TIE DRAWING  
Field Book 43 Page No. 57



- A - 2½" Aluminum cap
- B - N 23° W 3.14' to Survey Sign on 12" Tulip Poplar
- C - S 06° E 23.20' to MAG nail in 17" Tulip Poplar
- D - N 84° W 34.53' to MAG nail in 14" Shagbark Hickory

Not To Scale  
Compass Bearing Magnetic North

I, Kevin P. Enright, Monroe County Surveyor, hereby certify that this document was prepared under my direction in accordance with the provisions of section 36-2-12-1 of the Indiana Code; and the above data is given under my hand and seal this 15th day of March, 2010.

*Kevin P. Enright*  
\_\_\_\_\_



Administered by the Monroe County Surveyor Review Board

Date: 4-13-2010